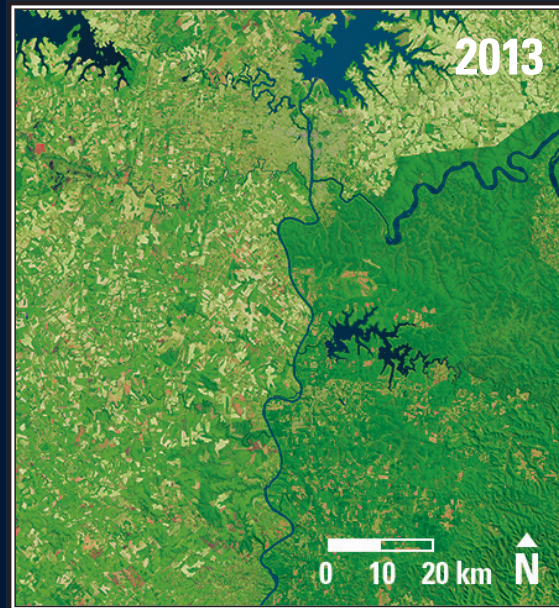


Earthshots

Iguazú, South America



Iguazú, South America 1973-2013

Iguazú National Park is the bright green in the lower right of these images. Deforestation begins in the 1973 image with the fishbone pattern in the upper left. The reservoir seen in the 2013 image formed behind the Itaipú Dam in 1982.

Date	Satellite	Bands	Res	Path	Row
Feb. 23, 1973	Landsat 1 MSS	7,5,4	79 m	240	78
Aug. 19, 2013	Landsat 8 OLI	7,5,3	30 m	224	78

Earthshots: Satellite Images of Environmental Change

The U.S. Geological Survey Earth Resources Observation and Science (EROS) Center archives data from the Landsat satellites (1972–present). Earthshots presents environmental changes using Landsat images.

