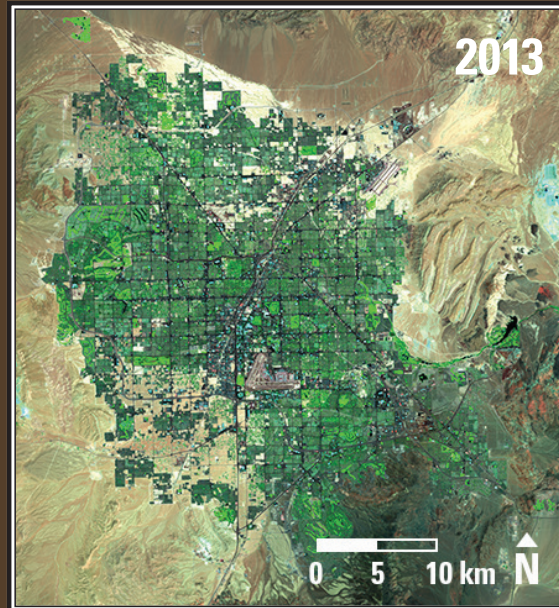
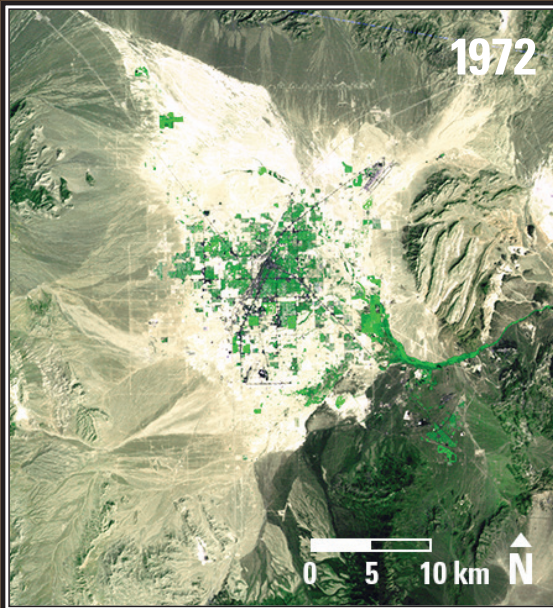


Earthshots

Las Vegas, Nevada, USA



Las Vegas, Nevada, USA 1972-2013

Between 1972 and 2013, the population of Las Vegas grew from 273,000 to over 2 million. Spurred by expansion of the gaming and tourism industries, Las Vegas is one of the fastest growing metropolitan areas in the United States. The urban growth is steadily infringing on the arid ecosystems surrounding the city.

Date	Satellite	Bands	Res	Path	Row
Sept. 13, 1972	Landsat 1 MSS	5,7,4	79 m	42	35
June 16, 2013	Landsat 8 OLI	7,5,4	30 m	39	35

Earthshots: Satellite Images of Environmental Change

The U.S. Geological Survey Earth Resources Observation and Science (EROS) Center archives data from the Landsat satellites (1972–present). Earthshots presents environmental changes using Landsat images.



<http://earthshots.usgs.gov>